



Equipment

Designation	Fluid inlet fitting	Cartridge	Suction rod	Drain rod	Atomizing air regulator	Air regulator fluid pressure	Pump outlet filter	Part number
Wall mounted 15C50 F 1/2 BSP with Air plate	F 1/2"	GT	-	-	♦	♦	-	151143000
Wall mounted 15C50 M26x125 with Air plate	M 26x125	GT	-	-	♦	♦	-	151143050
Wall-mounted 15C50 with filter and rods	M 26x125	GT	Ø25	♦	♦	♦	♦	151143250
Wall-mounted 15C50 with filter	M 26x125	GT	-	♦	♦	♦	♦	151143450

Accessories

Designation	Part number
Wall-mounted totem	151140240
Stand	151140210
Gravity hopper 6 liters	151140230
Easyflow suction rod Ø25 plunging tube length 600mm (for up to 60 liters drum)	149596150
Easyflow suction rod Ø25 plunging tube length 1000mm (for 200 liters drums)	149596160
Stainless steel drain rod F 18x125	049596000
Fluid filter	155580600
Double post cart	151241000

Kits

Designation	Version	Suction rod	Hoses length	Gun	Gun filter	Aircap	Tip	Part number
Spraypack 15C50 + Xcite™	Wall	Ø 23 (M26x125)	7.5 m (23 feet)	Xcite™ 120	♦	VX24	-	151265050
Spraypack 15C50 + Xcite™	Wall	-	7.5 m (23 feet)	Xcite™ 120	♦	VX24	-	151265052
Spraypack 15C50 + Xcite™	Wall	Ø 23 (M26x125)	7.5 m (23 feet)	Xcite™ 120	♦	VX24	-	151265053
SPRAYPACK 15C50 + XCITE™ LIGHT	Wall	Ø 23 (M26x125)	7.5 m (23 feet)	Xcite™ Light 120	n the pump	VX124	12.114	151143600

15C50

Airmix® Paint Pump

Airmix® / Pumps



PRODUCTIVITY FOR ALL

- Perfect Airmix® finish
- Built with minimal parts
- Lowest cost of ownership



Markets



15C50

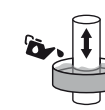
Airmix® Paint Pump

The compact AIRMIX® paint pump is the ideal partner for your AIRMIX® spray guns providing exceptional finish quality & high transfer efficiency.

Technologies



GT Sealing



Cup Lub



2 Ball



Triple Chrome Layer

The 15C50 compact AIRMIX® paint pump is recommended to handle all types of materials ranging from medium to low viscosity. The 15C50 AIRMIX® is particularly suited for 1 or 2 AIRMIX® gun applications and heated spray systems. Create various AIRMIX® & AIRMIX® electrostatic configurations with our large choice of accessories to meet all customer requirements.

Technical data table

Designation	Value	Unit: metric (US)
Pressure Ratio	15/1	
Maximum Fluid Pressure	90 (1305)	bar (psi)
Maximum Air Pressure	6 (87)	bar (psi)
Air Consumption	3.55 (2.09)	m³/h (cfm)
Maximum Temperature	60 (140)	°C (°F)
Cylinder	50 (1.68)	cc (oz)
Weighted Sound Level	74.9	dBA
Recommended Air Pressure	2 - 5 (29 - 72.5)	bar (psi)
Fluid Output at 30 cycles/mn	1.5 (0.4)	l/min (gal/mn)
Fluid Output at 20 cycles/mn	1.0 (0.26)	l/mn (gal/mn)
Fluid Volume per Cycle	50	cc
Free Flow Rate	3.0 (0.78)	l/mn (gal/mn)
Fluid Output at 15 cycles / mn	0.75 (0.2)	l/mn (gal/mn)
Air Consumption at 30 cycles/mn at 4 bar (60 psi)	3.55	m³/h (cfm)
Displacement Per Cycle	50 (3.05)	cc (cubic inch)
Motor Type	420-4	
Air Inlet	F3/8" BSP / F3/8" BSP	
Fluid Outlet	F 3/8 " NPS / M1/2 JIC	
Fluid Inlet	F 1/2 " BSP / M26x125	
Number of Cycles per liter of products	20	
Sealing Packing Upper and Lower GT polyethylene	♦	
Height	58.5 (23)	cm (in)
Width	32 (12.6)	cm (in)
Depth	17 (6.69)	cm (in)
Wetted Parts: Hard Chrome SST, Standard SST, Carbide	♦	
Weight	8 (17.6)	kg (lbs)

Performance

- ◆ Quiet and balanced air motor for constant delivery
- ◆ Ergonomic design
- ◆ Pulse-free for a superior finish
- ◆ Able to prime at very low air pressure (0.6 bar / 8.7 psi) for easy paint loading
- ◆ Designed to eliminate dead zones for quick color changes

Productivity

- ◆ Closed construction - zero injury risk
- ◆ Lubricant protected from external contamination
- ◆ Easy rotatable outlet fitting to fit every configuration
- ◆ No tie rods - intermediate hosing for easy assembly
- ◆ Leak indicator weep hole for fast visual inspection
- ◆ Simple coupling & quick disassembly
- ◆ Large foot valve (Ø20, Ø14) to handle high viscosity materials up to 5,000 cPs - carbide seat

Sustainability

- ◆ Differential air motor for a stall-free system
- ◆ Quick reversing valve to eliminate pump surge
- ◆ Ice-free air motor
- ◆ 50% fewer parts vs competition, less spare parts required
- ◆ GT cartridge:
 - no throat packing maintenance
 - low friction
 - flat cartridge body design to eliminate dead zones for easy flushing
- ◆ Ultra chrome-plated piston rodless friction & abrasion resistance for increased pump life
- ◆ Exhaust valve (upper) has large passages and carbide seat

Description

